



Titan Workspace

# Transforming Microsoft Teams Into Digital Workplace

Increasing Office365 and Teams Adoption

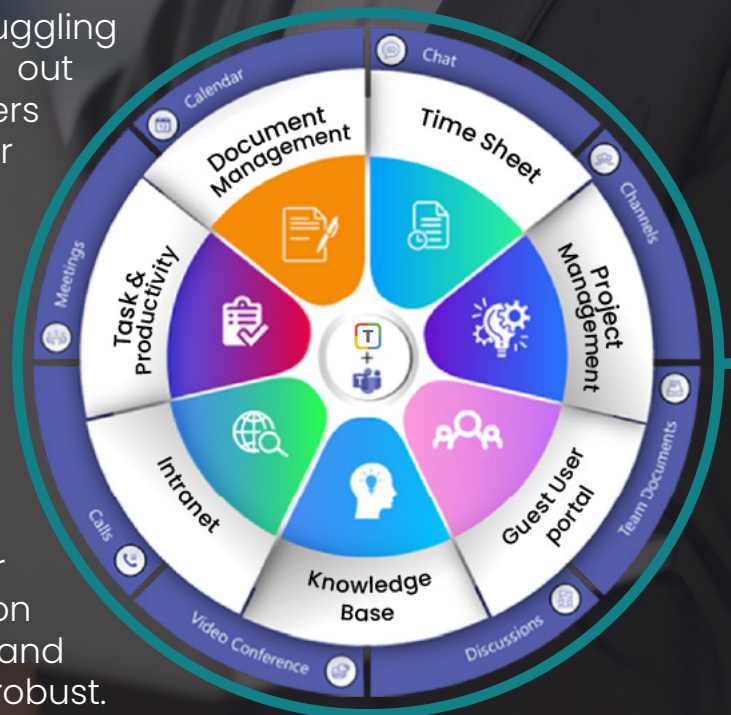
# Light Up Your Office365

Quickly roll out collaborative features of M365 without any training or customization

Titan Workspace is an Integrated App that leverages the power of SharePoint within Microsoft Teams to deliver very useful productivity tools.

## What problem do we solve?

The majority of M365 customers are struggling to fully utilize M365. To successfully roll out these collaborative features, customers not only have to spend a lot for customization and training, they also have to invest in SharePoint and other technical skills for ongoing maintenance and support. This often results in lower-than-expected adoption for M365. Titan Workspace has simplified the important collaboration tools within M365 which can be rolled out quickly without any additional customization or training. Our tools within Titan Workspace focus on enhancing employee productivity and making employee engagement more robust.



# BUSINESS BENEFITS



1

## Improve internal communication and employee engagement.

Ready to rollout feature rich Intranet to manage News, Announcements, Surveys, Events, Q&A, Recognitions, Celebrations, Social Media feeds, Knowledge Base, Social connect and more.

## Improve document control and security.

M365 offers great features for document management. However, it is extremely difficult for a business users to setup rights, permissions and learn SharePoint to setup their DMS properly. Titan Workspace has a customized ready to use to document management system that helps a company to roll out DMS for all business users instantly.



2



3

## Ensure timely action by having better visibility into pending tasks.

Titan Workspace offers comprehensive task management system that handles task lifecycle. It manages individual, general, project or group tasks with an intuitive task dashboard that gives full visibility of progress and delays.

## Effective way to manage projects.

Titan Workspace provides a simple and yet more effective way to manage your projects. Consolidated view of project team, tasks, documents, timesheets for projects. More than 80% of your business users do not need complex project tools such as Microsoft Project and Titan Workspace is most suitable for them.



4



5

## Improve productivity of remote workforce.

It creates a central repository of knowledge that makes it easy for remote workers to access right information 24x7. This saves significant amount of unproductive time that is generally consumed for timely information access. Timesheets can be captured against tasks to analyse where all our manpower and resources getting consumed.

## Extend guest user portals to your customers, vendors, temp. workers, consultants.

Titan Workspace allows you to setup dedicated guest user portals for your external users such as Customers, Partners, Vendors, Consultants, Students etc. You can share documents, assign them tasks, add them to your projects as team members, track progress, send important communication, share news, gather opinion, track their attendance, monitor their timesheets and so on.

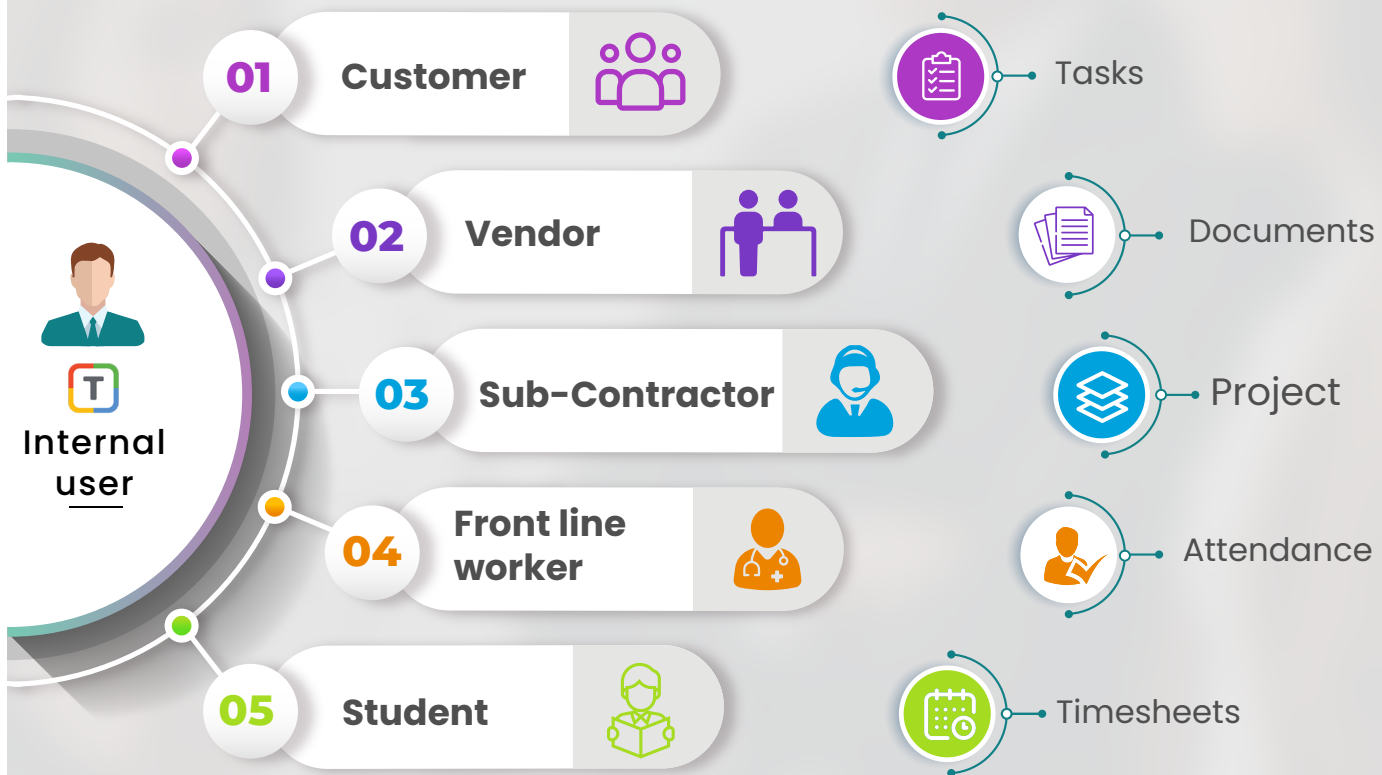


6

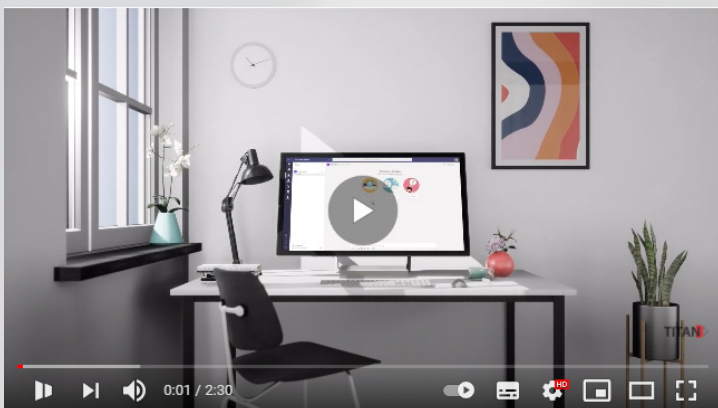
# Adding more power to Microsoft Teams

## Set-up Guest User Portal

Does not consume M365 license for Non-Active Directory users

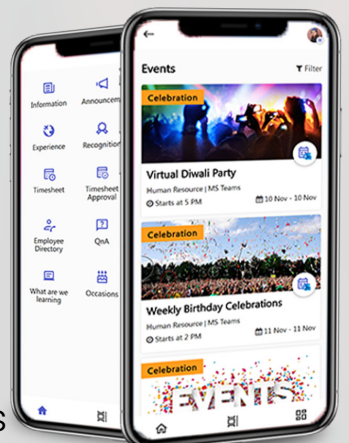


### A Revolutionary Modern Workplace within Microsoft Teams



### Your Workplace in Mobile

Mobile App to drive adoption and empower frontline worker feature native mobile app that keeps internal and external users updated with the latest information, documents, actions and follow-ups.



# Simplify your M365 governance



No technical  
skills needed



No SharePoint  
skills needed



100%  
configurable



No Code  
Solution



Simplified  
External User  
Management



Quick  
Deployment

## Setup separate digital workplace for every subsidiary on a single M365 tenant.

Multi Company Architecture



DESIGNED FOR



**Titan Workspace**  
[www.titan4work.com](http://www.titan4work.com)

TFW Labs Inc.  
2100 N Greenville Ave  
Richardson, Texas 75082 USA

Adapt Software India Pvt. Ltd.  
Gurgaon - 122001, Haryana, India

**SaaS**  
Per User Per Month Subscription

[info@titan4work.com](mailto:info@titan4work.com)